

Trace

Desktop Workforce /
Fleet Management System



Introduction

TRACE is an extension of SD's Geographical Information System (**SPACE**) which incorporates a range of GPS tracking devices that enable users to monitor on a real-time basis the location of its workforce and assets.

System Overview

TRACE is an enterprise client-server fleet management and tracking solution designed to manage large fleets of up to 500 vehicles. The solution is dedicated system which offers a much faster rate of GPS updates and provides greater security and control.

This is an off the shelf solution is readily deployable in the following scenarios.

Pre-Event Planning

- Formation of team structures
- Calculation of planned routes and detailed analysis
- Simulation and briefing to convoy teams prior to event

Real-Time Operations

- Real-time fleet monitoring
- Event management
- Team co-ordination
- Advance contingency planning

Post Review Operations

- Historical replay of events
- Performance Benchmarking

Features

The following functions are used primarily for real-time fleet tracking and monitoring. Information is transmitted to the control centre via GSM and is stored centrally in the **TRACE** Server Application. Clients will log into the server module to view real-time positions and status of vehicles.

Device Status Monitoring and / Multiple Tracking Screen

- Primary view of vehicle fleet and status.
- Personal window to track a particular vehicle / convoy.



Device Poll Settings / Configurations

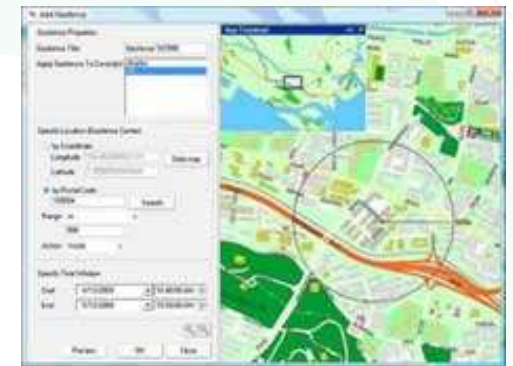
- Remote configuration of polling rates.
- View current position of the vehicle.

Panic Button Alert

- Emergency button to alert control centre by triggering a remote message to **TRACE** Client notifying driver in distress (installation dependent).

Geofence Alert / History

- Virtual geofence to trigger alert to TRACE Client via screen pop up and sound alert when vehicle enters / exits the predefined boundary.
- Geofence violation alerts sent via SMS to designated mobile phone number (SMS modem required).
- Generate geofence violation reports of specified vehicle.



Route Deviation Alerts

- Route deviation alert if vehicle deviated from pre-assigned route.

Vehicle Bunching Alerts

- Alert control centre in the event if vehicles are about to meet or bunch.

Object Approach Alerts

- Query a database of Points of Interests (POI) to identify key landmarks that will be passing through based on a specified planned route(s) to adhere.
- Notification of approaching objects (Eg. Traffic Cameras) and ability to view moPre details by selecting the object(s) of interests.

Real-Time GPS Tracking / Estimated Time to Arrival

- View and obtain real-time location of personnel / fleet.
- Compute the estimated time to arrival based on real-time travel speed, distance or assumed speed to destination using predefined route.



GPS Historical Playback / Report

- Quick historical selection of 6, 12 and 24 hours travelling history.
- Display and view animation of travelled route.
- Generate and export historical reports in MS Excel.



Device Connectivity

TRACE has been designed to integrate with a wide variety of devices which are based on standard NMEA WGS 84 protocols. These include GPS based tracking devices or cell based mobile devices.

TRACE can support communication with devices using SMS and GPRS protocols. Each device serves a specific usage in accordance to the client's operational requirements.

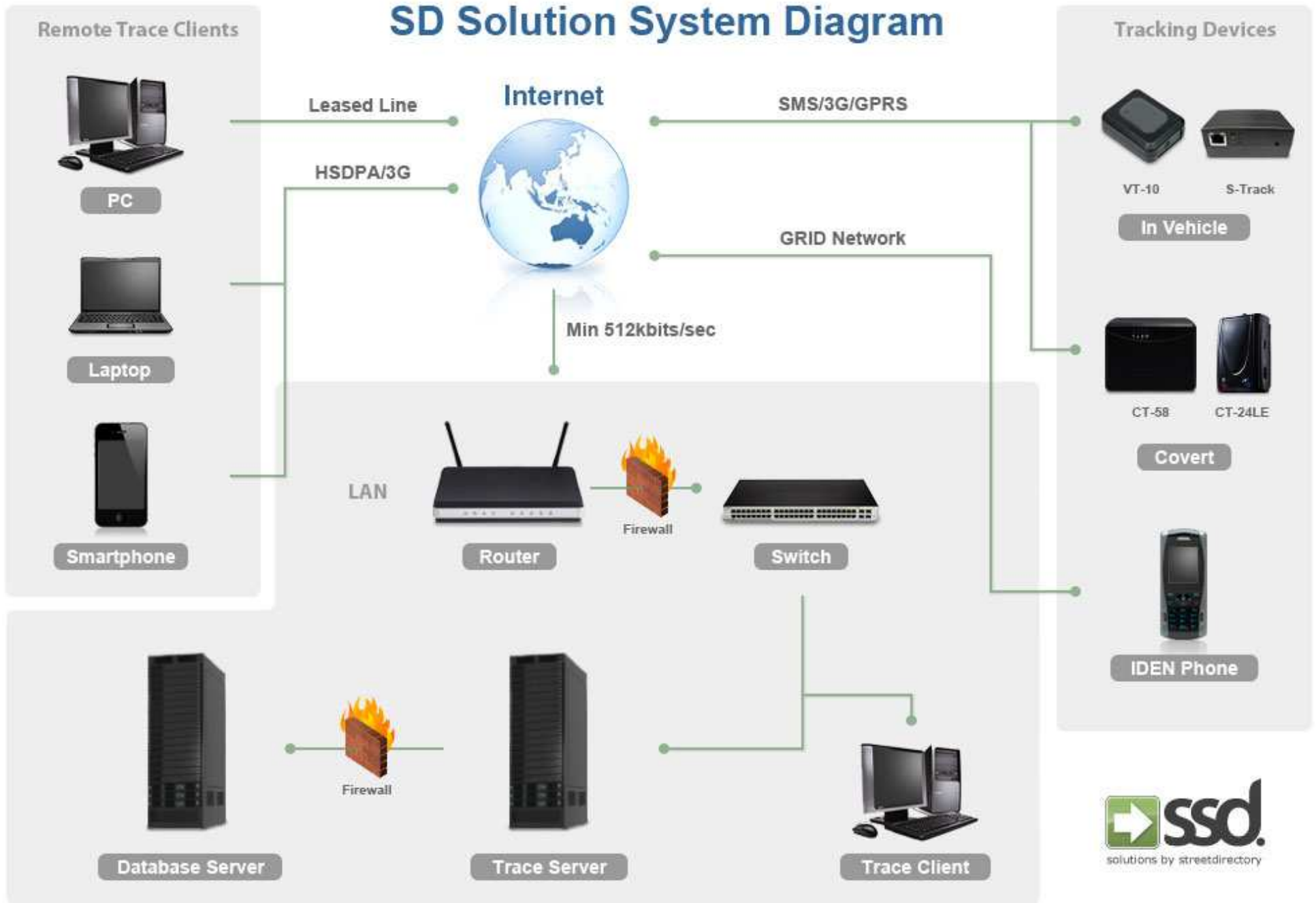
Please obtain product brochure of the various hardware devices integrated with **TRACE** for perusal.

Customer References

NATURAL COOL®
Airconditioning & Engineering Pte Ltd

AXS

SD Solution System Diagram





Streetdirectory (SD) is a technology firm that focuses on developing location-based software and solutions. Established in 2008 and managed by the same team of personnel who operates www.streetdirectory.com, the company has acquired specialized skills in the area of Digital Map Imaging, Spatial Analysis and Wireless Navigation.

To meet the demands of different industries, SD manages a portfolio of 4 distinct service lines each leveraging on SD's core mapping capabilities. These range from online location based services to customized PC based GIS systems. Each service line has achieved a high level of customer traction and is complementary in nature. The firm also offers advertising opportunities at its widely popular portal Streetdirectory.com™ in which we showcase our latest developments.

Having established a strong product offering in Singapore, SD actively replicates its marketing mix in the Asia Pacific region, adjusting itself where necessary. These markets offer significant growth potential and operations in these countries will be necessary in order to service our MNC customers based in Singapore.

Streetdirectory Pte Ltd

305 Alexandra Road #05-12

Vantage Automotive Centre

Singapore 159942

Tel: (65) 6474 4005 Fax: (65) 6474 4525

<http://corporate.streetdirectory.com>

Email: sales@streetdirectory.com



WEBLOCATE

online geographic
information system



SPACE

desktop geographic
information system



TRACE^m

wireless applications



TRACE

workforce location
system